



Pressure operated water valve

WVO

Compact valve

Description

Pressure operated water valve type WVO is used for regulating the flow of water in refrigeration plant with water-cooled condensers.

The pressure operated water valve gives modulating regulation of the condensing pressure and so keeps it constant during operation. When the refrigeration plant is stopped, the cooling water flow is shut off automatically.

Pressure operated water valve can be used with flammable refrigerants. Double sealing between the refrigerant and the water line ensures that in case the bellows damage and the refrigerant leak, it cannot enter into the water. This severely limits the safety implications.

It means that the valve can be used together with a double walled heat exchanger and water circuit in such a system does not need to be considered as a part of the installation for flammable refrigerants (EN378-1:2008, clause 4.4.2.2).

Features & benefits

- Compact valve
- Setting pressure done by factory (optional)
- HCFC, HFC and HC
- NPT threads on request
- Capillary tube available as option
- Stainless steel version available for request
- Suitable for flammable refrigerants
- May be used in the following EX range: Category 3 (Zone 2)

Ordering

Product code numbers

Table: Ordering

Type	Connection type	Connection standard	Pressure range		Code number
			[bar]	[psig]	
WVO 10 LF	G 3/8	ISO 228-1	8 – 12	115 – 175	003N8053 ⁽²⁾
WVO 10 LF	G 3/8	ISO 228-1	14 – 18	200 – 260	003N8054 ⁽²⁾
WVO 10	G 3/8	ISO 228-1	8 – 12	115 – 175	003N5203
WVO 10	G 3/8	ISO 228-1	14 – 18	200 – 260	003N5206
WVO 10	G 3/8	ISO 228-1	16 – 20	232 – 290	003N5207
WVO 10	G 3/8	ISO 228-1	16 – 22	232 – 320	003N6220 ⁽¹⁾
WVO 15	G 1/2	ISO 228-1	Available on request		
WVO 20	G 3/4	ISO 228-1	Available on request		
WVO 25	G 1	ISO 228-1	Available on request		
WVO 10	NPT 3/8	ANSI/ASME B1.20.1	6 – 10	85 – 145	003N8052
WVO 10	NPT 3/8	ANSI/ASME B1.20.1	14 – 18	200 – 260	003N8056
WVO 15	NPT 1/2	ANSI/ASME B1.20.1	6 – 10	85 – 145	003N8062
WVO 15	NPT 1/2	ANSI/ASME B1.20.1	14 – 18	200 – 260	003N8066
WVO 20	NPT 3/4	ANSI/ASME B1.20.1	14 – 18	200 – 260	003N8076
WVO 25	NPT 1	ANSI/ASME B1.20.1	Available on request		

⁽¹⁾ With 0.8 m capillary tube and valve opener

⁽²⁾ WVO 10 low flow version with k_v value: 0.63 m³/h

NOTE: Codes for valve with prefabricated factory setting, other sizes and pressure ranges are available on request.

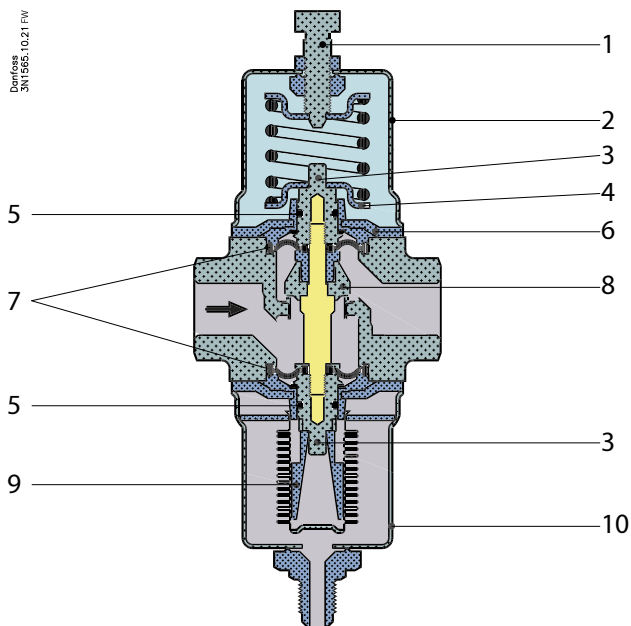
Accessories code numbers

Table: Accessories

Description	Code number
1 m (39 in) capillary tube 1/4 in (6 mm) flare coupling nuts at each end	060-007166
Bracket	003N0388

Functions

Figure: Design/Function



1	Screw for setting pressure
2	Spring housing
3	Spindle retainer
4	Spring retainer
5	O-ring
6	Guide bush
7	Diaphragm
8	Valve plate
9	Thrust pad
10	Bellows element

Condensing pressure impulses are transmitted via the bellows element to the valve cone so that the valve - even at very small pressure variations - is able to adapt the quantity of water required by the condenser.

If fluorinated refrigerants are to be used a capillary tube connection is required, 1 m capillary tube with 1/4 in. / 6 mm flared union nuts at either end can be supplied.

To protect the refrigeration plant against high head pressures - in the event that the water supply to the condenser should fail - a safety switch type KP or RT should be fitted on the high pressure side.

The valve plate (8) is a brass plate with a vulcanized layer of special rubber to form an elastic seal against the valve seat. The valve is externally sealed by the diaphragms (7).

The top and bottom of the valve plate holder is extended by a guide that is fitted with O-rings (5) to ensure the internal operating parts move correctly. These O-rings, fitted in conjunction with the diaphragms, also provide extra protection against external leakage.

The valve seat is made of stainless steel and is swaged to the valve body.

Media

Refrigerants

Table: Media specification

Features	Water side	Refrigerant side
Max. working pressure PS / MWP	16 bar / 232 psig	26.4 bar / 383 psig
Max. test pressure PT	24 bar / 350 psig	38 bar / 551 psig
Media	Fresh water and neutral brine	R22, R134a, R290 ⁽¹⁾ , R404A, R407A, R407C, R407F, R407H, R422B, R422D, R448A, R449A, R449B, R450A, R452A, R454A ⁽¹⁾ , R454C ⁽¹⁾ , R455A ⁽¹⁾ , R507A, R513A, R600 ⁽¹⁾ , R600a ⁽¹⁾ , R1234yf ⁽¹⁾ , R1270 ⁽¹⁾
Max. differential pressure	10 bar / 145 psi	-
Temperature range	-25 – 130 °C / -13 – 266 °F	-25 – 130 °C / -13 – 266 °F

⁽¹⁾ WVO is evaluated for R290, R454A, R454C, R455A, R600, R600a, R1234yf, R1270 by ignition source assessment in accordance with standard EN ISO80079-36. Flare connections are only approved for A1 and A2L refrigerants.

For complete list of approved refrigerants, visit store.danfoss.com, where refrigerants are listed as part of technical data.

Product details

General data

Table: Orifice size

Type	Orifice size		k_v value ⁽¹⁾	C_v value ⁽²⁾
	[mm]	[in]	[m ³ / h]	[gal / min]
WVO 10 LF	10	2/5	0.63	0.7
WVO 10	10	2/5	1.4	1.6
WVO 15	15	3/5	1.9	2.2
WVO 20	20	4/5	3.4	3.9
WVO 25	25	1	5.5	6.4

⁽¹⁾ The k_v value is the flow of water in [m³ / h] at a pressure drop across valve of 1 bar, $\rho = 1000 \text{ kg / m}^3$

⁽²⁾ The C_v value is the flow of water in [gal / min] at a pressure drop across valve of 1 psi, $\rho = 10 \text{ lbs / gal}$

Capacity

The capacity curves show the capacities of the individual valves (water quantity in [m³ / h]) depending on the water pressure drop across the valve. The capacity given apply at 85% valve opening and are obtained with the offset shown on [Figure: Offset](#).

Figure: Capacity - SI unit

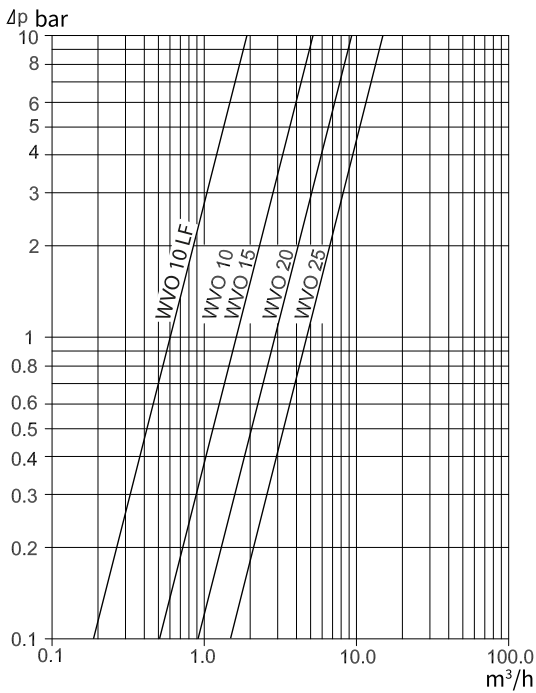
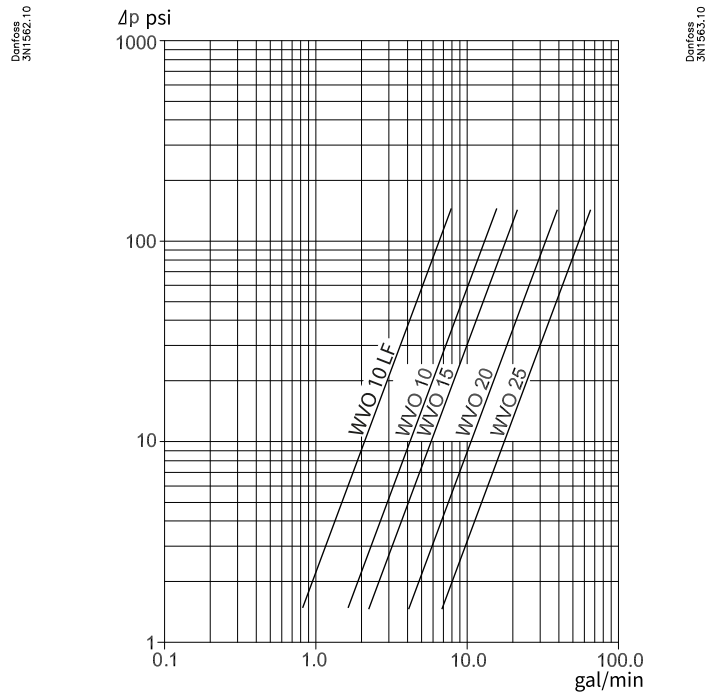


Figure: Capacity - US unit



Sizing

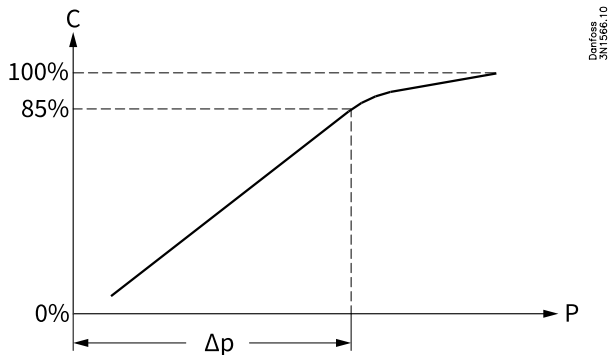
When sizing and selecting water regulating valves it is most important to ensure that the valve at any time is able to give the necessary quantity of cooling water.

To select a suitable size of valve it is necessary to know the precise amount of cooling required. On the other hand, to avoid the risk of unstable regulation (hunting) the valve should not be oversized. In general, the aim should be to select the smallest valve capable of giving the required flow .

To obtain a precise control it can be recommended to only use 85% of the capacity.

Below 85% the ratio between flow and condensing difference pressure is linear. Above 85% the ratio is no longer linear. To reach a 100% capacity the WVO needs significant increase of condensing pressure. See table at the bottom of the page.

Figure: Offset



C	Water capacity
P	Condensing pressure
Δp	Δp offset

Table: Offset

Type	Δp offset	
	[bar]	[psi]
WVO 10 LF	1.6	23
WVO 10	2.0	30
WVO 15	2.5	35
WVO 20	3.0	43
WVO 25	3.5	50

Valve size

- The following data is used when selecting the size of WVO
- Cooling capacity of condenser
- Temperature rise in cooling media
- Differential pressure across valve
- Condensing temperature
- Specific heat capacity of cooling media
- Refrigerant

Calculating size in SI Unit

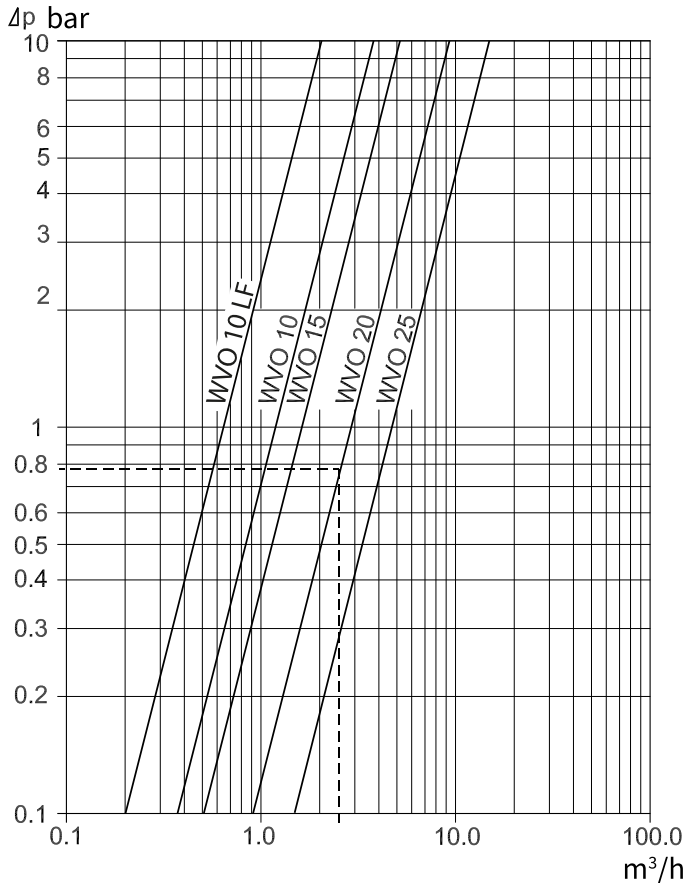
Example 1:

- Condenser capacity Q_0 : 30 kW
- Condensing temperature t_c : 35 °C
- Refrigerant: R134a
- Cooling media: water
- Specific heat capacity of water C_p : 4.19 kJ / (kg*K)
- Water inlet temperature t_1 : 15 °C
- Water outlet temperature t_2 : 25 °C
- Pressure drop across valve Δ_p : max. 1.0 bar

Table: Calculation for size - SI units

Features	Calculation
Necessary mass flow	$\dot{m} = \frac{Q_c}{C_p \cdot (t_2 - t_1)} \cdot 3600 = \frac{30}{4.19 \cdot (25 - 15)} \cdot 3600 = 2577 \text{ kg/h}$
Volume flow	$\dot{V} = \frac{\dot{m}}{\rho} = \frac{2577}{1000} = 2.6 \text{ m}^3/\text{h}$

Figure: Selecting size - SI units



Danfoss
3N1567.10

Selecting WVO 20 code number

The saturated pressure for R134a: $T_c = 35 \text{ °C} \rightarrow P_c = 7.9 \text{ barg}$

Choose a WVO 20 with 6 – 10 barg range

Example 2:

- Condenser capacity Q_c : 20 kW
- Condensing temperature t_c : 35 °C
- Refrigerant: R134a
- Cooling media: Brine
- Density of brine ρ : 1015 kg / m³
- Specific heat capacity of brine C_p : 4.35 kJ (kg*K)
- Brine inlet temperature t_1 : 20 °C
- Brine outlet temperature t_2 : 25 °C
- Pressure drop across valve Δ_p : max. 2.0 bar

Table: Calculation for size - SI units

Features	Calculation
Necessary mass flow	$\dot{m} = \frac{Q_c}{C_p \cdot (t_2 - t_1)} \cdot 3600 = \frac{20}{4.35 \cdot (25 - 20)} \cdot 3600 = 3310 \text{ kg/h}$
Volume flow	$\dot{V} = \frac{\dot{m}}{\rho} = \frac{3310}{1015} = 3.26 \text{ m}^3/\text{h}$
k_v value	$K_V \geq \frac{\dot{V}}{\sqrt{\frac{1000 \cdot 2.0}{1015}}} = 2.32 \text{ m}^3/\text{h}$



Selecting size of WVO 20

$k_v \geq 2.32 \text{ m}^3 / \text{h} \rightarrow \text{WVO 20}$

WVO 20 has $k_v = 3.4 \text{ m}^3 / \text{h}$ and the necessary capacity is below 85% of full capacity.

Code number

The saturated pressure for 134a: $T_c = 35 \text{ }^\circ\text{C}$ $P_c = 7.9 \text{ barg}$

Choose a WVO 20 with 6 – 10 barg range

Calculating size in US Unit

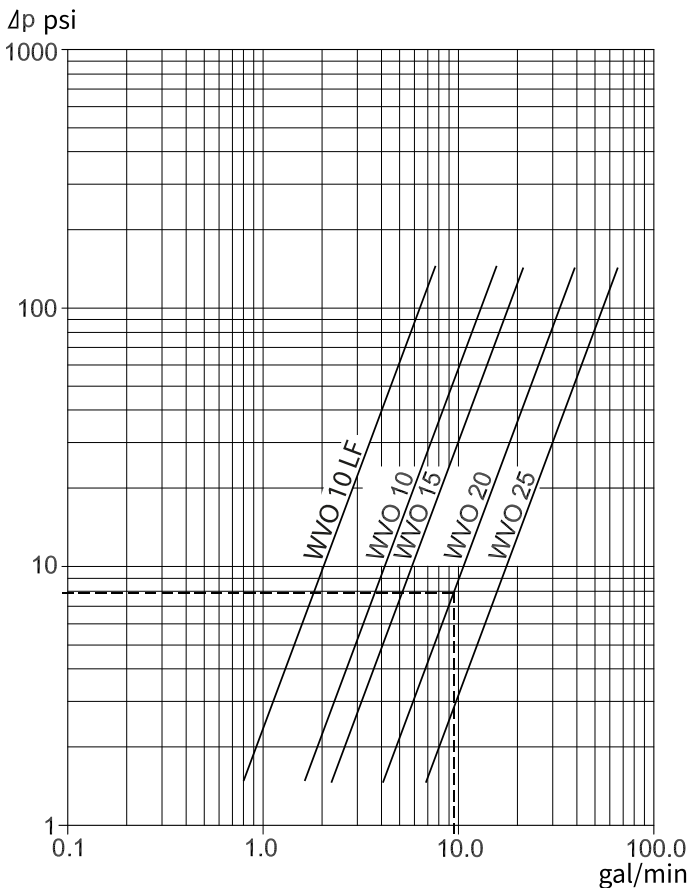
Example 1:

- Condenser capacity Q_c : 5 TR
- Condensing temperature t_c : 95 °F
- Refrigerant: R134a
- Cooling media: water
- Water inlet temperature t_1 : 60 °F
- Water outlet temperature t_2 : 75 °F
- Pressure drop across valve Δp : max 15 psi

Table: Calculation for size - US units

Features	Calculation
Necessary water flow	$V = \frac{Q_c \cdot 15000}{500 \cdot (t_2 - t_1)} = \frac{5 \cdot 15000}{500 \cdot (75 - 60)} = 10 \text{ GPM}$

Figure: Selecting size - US units



Danfoss
3N1568.10

Selecting WVO 20 code number

The saturated pressure for R134a: $T_c = 95 \text{ }^\circ\text{F}$ $\rightarrow P_c = 115 \text{ psig}$

Choose a WVO 20 with 85 – 145 psig range

Dimensions

Figure: Dimensions for Valve

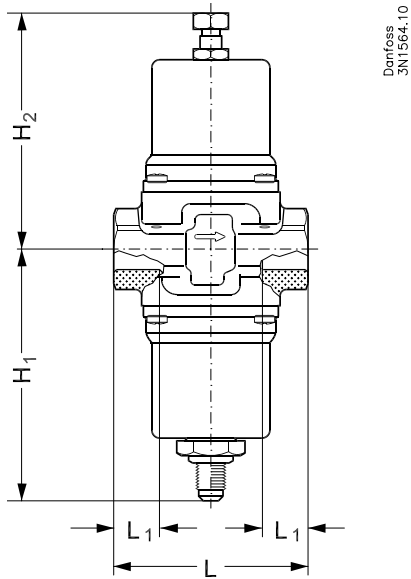


Figure: Dimensions for Bracket

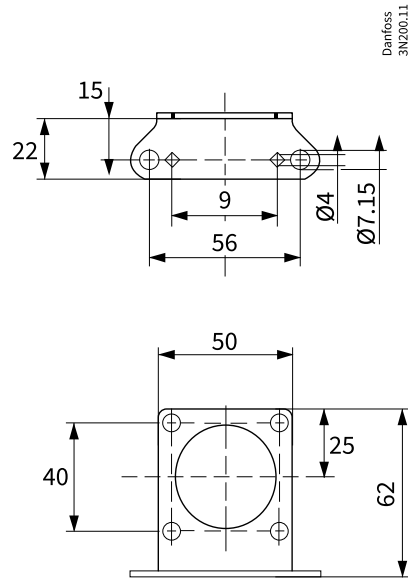


Table: Dimensions and weights

Type	H_1		H_2		L		L_1		Net weight	
	[mm]	[in]	[mm]	[in]	[mm]	[in]	[mm]	[in]	[kg]	[lbs]
WVO 10	91	3.58	89	3.50	72	2.83	11	0.43	1.0	2.20
WVO 15	91	3.58	89	3.50	72	2.83	14	0.55	1.0	2.20
WVO 20	91	3.58	89	3.50	90	3.54	16	0.63	2.0	4.40
WVO 25	96	3.78	94	3.70	96	3.74	19	0.75	2.0	4.40

Certificates, declarations and approvals

The list contains all certificates, declarations, and approvals for this product type. Individual code number may have some or all of these approvals, and certain local approvals may not appear on the list.

When you click on the link you will be directed to the latest version of the 'Declaration of Conformity'. Products developed and sold before this date of issue conform to the directives/standards in force at the time of their sale.

Approval type	Title	Certification body	Approval topic
Export Control Declaration	Pressure operated water valve	Danfoss	
Manufacturer's Declaration	Danfoss MD 003N9617.AC	Danfoss	PED, Pressure, EU RoHS
Export Control Declaration	Water regulating valves	Danfoss	
Pressure Safety Certificate	LLC CDC EURO-TYSK UA.TR.089.1015.02-22	LLC CDC EURO TYSK - Ukraine	PED, Pressure
Manufacturer's Declaration	Danfoss MD 003N9614.AA	Danfoss	China RoHS

Contact details

Online support

Danfoss offers a wide range of support along with our products, including digital information, software, mobile apps and expert guidance. See the possibilities below.



The Danfoss Design center

Discover the Design Center, our advanced digital platform that streamlines product selection. With integrated tools and enhanced type pages, it's simpler than ever to access product information and documentation, and to select the right products. Check the availability of Danfoss products at partner locations and enjoy seamless transitions from selection to purchase with our basket-to-basket functionality. Whether you're buying from our distributors or directly from the Product Store, the Design Center simplifies your experience. Learn more at: designcenter.danfoss.com.



The Danfoss product store

The Danfoss Product Store is a one-stop shop available 24/7 for our customers, no matter where you are in the world or what area of industry you work in. Browse our catalog, check product details and documentation, view your prices and product availability, and quickly finalize your purchase. Start browsing at: store.danfoss.com.



Danfoss Partner Portal/Product Data tool

Designed to support you with easy access to product data extracts, essential resources, tools, and information. The Partner Portal provides a centralized hub for product documentation, training materials, marketing assets, and technical support, ensuring you have everything you need to succeed and grow your business with Danfoss. The Partner Portal is available 24/7 at: partner.danfoss.com and is ready to support your business.



Find technical documentation

Find technical documentation you need to get your project up running. Get direct access to our official collection of data sheets, certificates and declarations, manuals and guides, 3D models and drawings, case stories, brochures, and much more. Start searching now at: documentation.danfoss.com.



Danfoss Learning

Danfoss Learning is a free online learning platform. It features courses and materials specifically designed to help engineers, installers, service technicians, and wholesalers better understand the products, applications industry topics, and trends that will help you do your job better. Find your local Danfoss website here: learning.danfoss.com.



Get local information and support

Local Danfoss websites are the main sources for help and information about our company and products. Find product availability, get the latest regional news, or connect with a nearby expert - all in your own language. Find your local Danfoss website here: danfoss.com.

Danfoss A/S

Climate Solutions . danfoss.com . +45 7488 2222

Any information, including, but not limited to information on selection of product, its application or use, product design, weight, dimensions, capacity or any other technical data in product manuals, catalogues description, advertisements, etc. and whether made available in writing, orally, electronically, online or via download, shall be considered informative, and is only binding if and to the extent, explicit reference is made in a quotation or order confirmation. Danfoss cannot accept any responsibility for possible errors in catalogues, brochures, videos and other material. Danfoss reserves the right to alter its products without notice. This also applies to products ordered but not delivered provided that such alterations can be made without changes to form, fit or function of the products. All trademarks in this material are property of Danfoss A/S or Danfoss group companies. Danfoss and the Danfoss logo are trademarks of Danfoss A/S. All rights reserved.
